



HYDRAULIC DRIFTER

HC28



POWER RATING
10 KW



FLUSHING
AIR/WATER



HOLE DIAMETER
32-64 mm

COMPACT AND POWERFUL

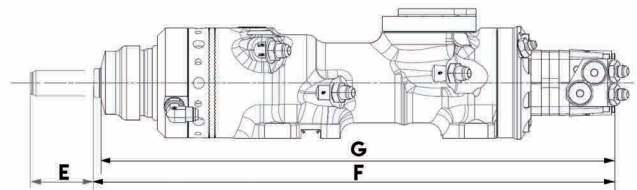
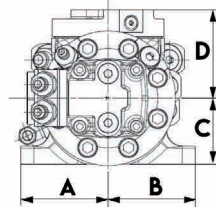
FOR BOTH SURFACE AND UNDERGROUND:
A VERSATILE, HIGH-PERFORMANCE
DRIFTER IN ALL ITS CONFIGURATIONS

UNDERGROUND: ROCK BOLTING AND
INSERTION OF MECHANICAL AND RESIN
BOLTS; "DRILL & BLAST" WORK

SURFACE: ANCHORING, "DRILL &
BLAST" & "DRILL & SPLIT" WORK

BENEFITS

- Single body drifter with no tie rods; reliable with **very low maintenance costs**.
- Front head of **stainless steel**.
- Patented **inline rotation** system.
- Made in France: high quality steels, cutting-edge processes.
- Easy to install on all machines; light.
- «**Quick exchange**» shank is replaced easily, without disassembling.
- Reliable and robust.



WEIGHT AND DIMENSIONS

WEIGHT (KG)

WEIGHT	103
--------	-----

DIMENSIONS (MM)

A	113
B	113
C	86
D	114
E	R32M, T35M, R38M, T38M
F	R25F, R28F, R32F
G	785

ROTATION SPECS

	100CC	125CC	160CC
ROTATION SPEED (MAX, RPM)	300	300	300
OIL FLOW (L/MIN)	30	37.5	48
PRESSURE (MAX, BAR)	210	210	210
TORQUE (MAX, NM)	301	376	482

AIR/WATER CONSUMPTION

WATER INJECTION @ 10-15 BAR (L/MIN)	30 - 60
AIR FLUSHING @ 5-10 BAR (M ³ /MIN)	5
LUBRICATING AIR CONSUMPTION @ 3 BAR (L/MIN)	300

IMPACT RATING

POWER OUTPUT (MAX, KW)	10
PRESSURE (MAX, BAR)	170
IMPACT FREQUENCY (MAX, BPM / Hz)	3,300 / 55
IMPACT ENERGY (MAX, J)	172

OVERHAUL KITS

REFERENCE

SEAL KIT	On request
800 IMPACT HOURS KIT	On request
1600 IMPACT HOURS KIT	On request
3200 IMPACT HOURS KIT	On request

MACHINE INTEGRATION

INTELSENSE REGULATION SYSTEM	Regulates and adjusts percussive power / Seize prevention / Water safety / Regulates torque and thrust
HOSES CONNECTIONS	Reversible connections (left or right) / 7
CRADLE	Can be customised on request
FEED	Timberock



SHANK ADAPTER



REFERENCE	R25F	R28F	R32F - R32M	T35M	R38M	T38M
-----------	------	------	-------------	------	------	------

Non-exhaustive list. Please contact us for further information.



The content of this brochure constitutes non-binding information and may be changed at any time without notice. Montabert gives, and the brochure contains, no warranties whatsoever, express or implied. All the contents, including but not limited to text, images, graphics are all subject to copyright and all intellectual property protection. Their use or misuse is strictly prohibited. Montabert brand and logo used herein are the property of Montabert. Nothing contained on this document shall be construed as constituting any commitment by Montabert or as granting any license or right to use any intellectual property. ©2024 Montabert. All rights reserved.

montabert.com

